

MATRIX®
VI
CUSHION



When it comes to wheelchair cushions, few have stood the test of time like the **Matrix® Vi**. The highly popular Matrix Vi continues to be a trusted choice among users and clinicians alike. Designed for advanced skin protection, comfort, and stability, it remains a go-to solution for those seeking reliable support without compromise.

Call to order

US: 1.888.433.6818 | CAN: 1.866.748.7943
motionconcepts.com



matrix® vi

Outer Cover

- Meshtex or Kidabra Meshtex (pediatric sizes)
- Moisture resistant and breathable for comfort
- Includes slip resistant base, hook and loop fasteners, lifting strap and orientation diagram



Inner Cover

- Zippered, wipeable Startex™ inner cover for extra moisture protection
- Easy access for cushion modifications



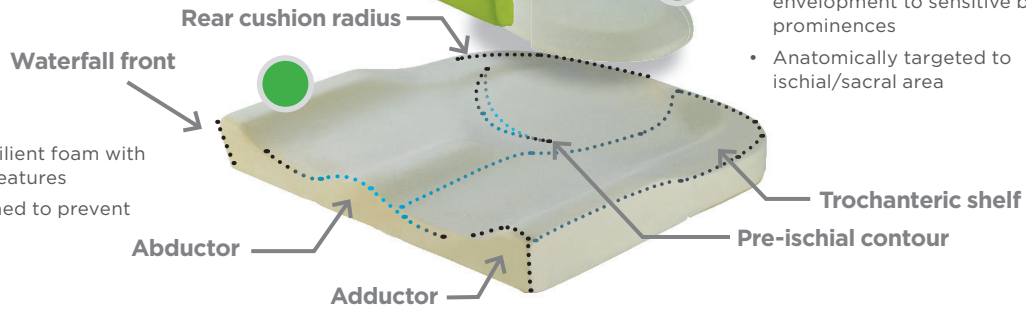
Top Layer

- Molded soft High Resilient foam overlay for immersion, support and comfort
- Pre-ischial contour provides stability to pelvis
- Made with Ultra-Fresh™ for antibacterial and odor protection



Ischial Relief Insert

- Molded visco-elastic foam provides envelopment to sensitive bony prominences
- Anatomically targeted to ischial/sacral area



Bottom Layer

- Molded firm High Resilient foam with multiple positioning features
- Highly durable designed to prevent bottoming out

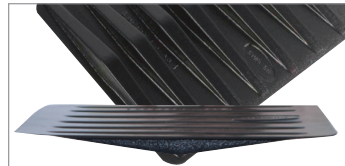
Options



Custom Modifications – Leg length discrepancies, special sizes

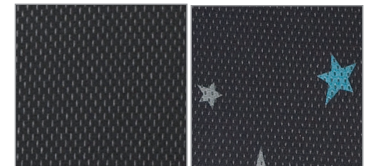


POK – Pelvic Obliquity Kit (2 pieces)

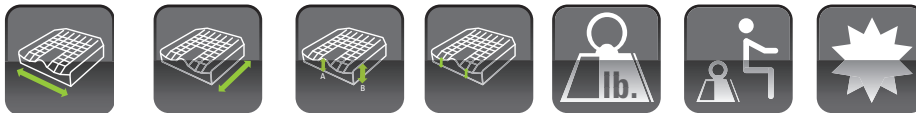


Cushion Rigidizer alleviates hammock effect of upholstery

Meshtex Fabric



Standard & Heavy-duty Sizes Pediatric Sizes



Model #	Width	Depth	Height Abductor/Adductor	Height at Leg Trough	Product Weight	Weight Capacity	Limited Warranty
KA-Vi (Pediatric)	12"-14"	12"-14"	2.87"/2.75"	2"	1.5 lb. and up	150 lb.	2 Years
MA-Vi (Standard)	14", 16", 18", 20", 22"	15"-20"	2.75"/3.25"	2.5"	3 lb. and up	150 lb.	2 Years
MA-Vi (Heavy-Duty)	22"-30"	18"-26"	3.25"/3.75"	2.5"	4 lb. and up	600 lb.	2 Years

Motion Concepts
www.motionconcepts.com
info@motionconcepts.com

USA
700 Ensminger Rd., Suite 112
Tonawanda, NY 14150
(888) 433-6818
Fax: (888) 433-6834

Canada
505 Cityview Blvd. Unit 1
Vaughan, ON L4H 0L8
(866) 748-7943
(905)-695-0134
Fax: 905-695-0138

